

INSTALLATION CONSIDERATIONS:

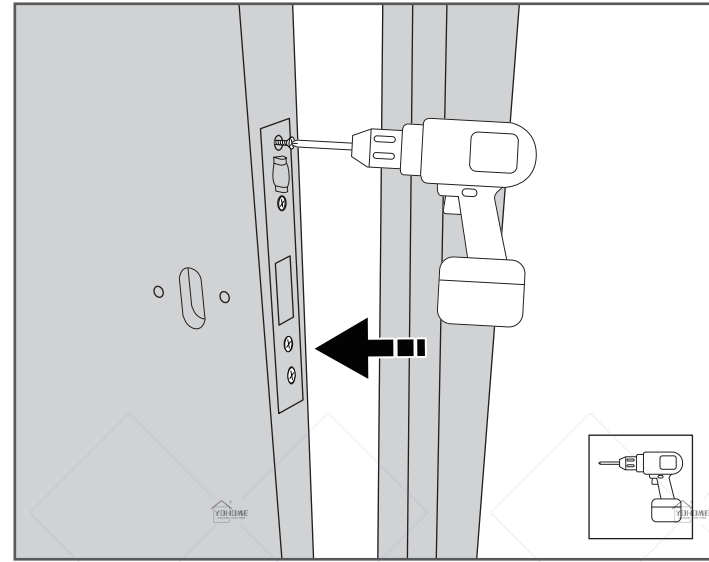
1. Measure size: before buying an pivot entry door, carefully measure the size of the door to make sure that the door of the right size is selected.
The height, width and thickness of the door frame need to be taken into account to ensure that the door is installed correctly and opens and closes smoothly.
2. Preparation tools: prepare the necessary tools, such as screwdriver, rubber hammer, level, etc., before installing the interior door.
These tools will help you complete the installation process more easily.
3. Reading instructions: carefully read the installation instructions for pivot entry door provided by the supplier.
Follow the steps in the instructions to ensure that the installation is completed correctly and safely.
4. Check the status of the door: before starting the installation, check that the purchased pivot entry door is in good condition.
Ensure that there are no breakages, cracks or other quality problems.
5. Safety operation: please pay attention to your own safety during installation.
Use appropriate tools and techniques to avoid accidental injuries and follow relevant safety guidelines and precautions.
6. Fixed support: fix the support on the wall or door frame as needed so that the door is firmly in place.
Ensure that the support is secure and properly secured.
7. Adjust the position of the door: adjust the position of the door to suit the direction in which you want to open and close the door, as needed.
Make sure the door is aligned with the door frame and that there is enough space to open and close.
8. Regular maintenance: in order to keep the pivot entry door in good condition, clean and lubricate the door tracks, hinges and locks regularly.
This will help to prolong the service life of the pivot entry door and ensure its normal operation.

Please install the pivot entry door in accordance with the above precautions, and always give priority to safety.
If you have any questions about the installation process or need further assistance, please consult a professional or contact the supplier.

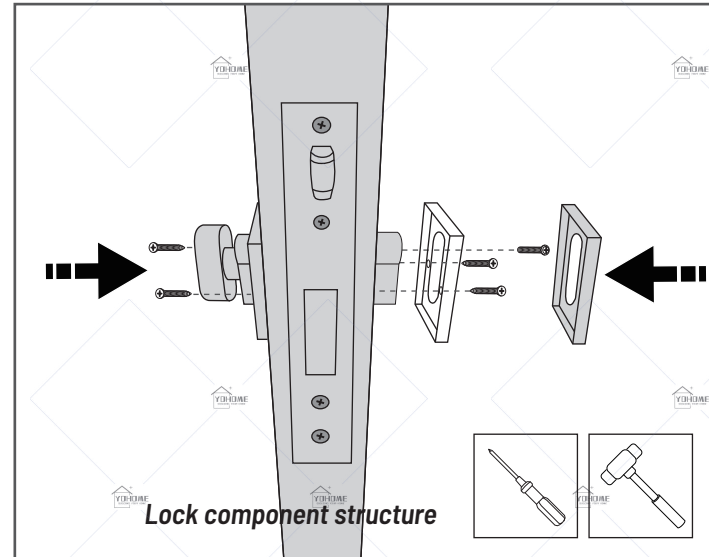
We wish you a safe and smooth completion of the installation of pivot entry doors!

Installation steps

- 11 Install the door lock and tighten the lock core component with screws.



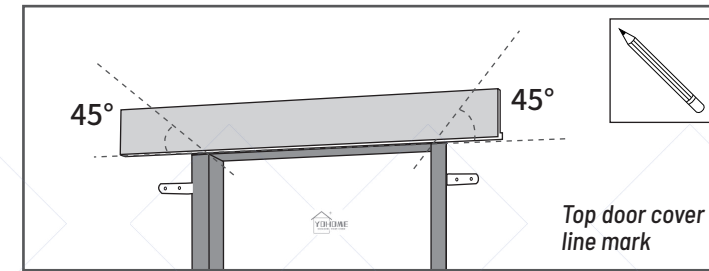
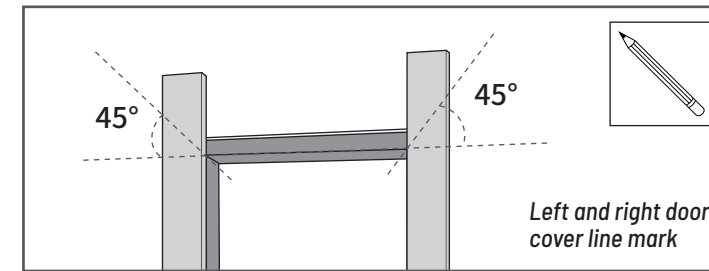
- 12 Install the handles on both sides of the lock and finally tighten the bottom with screws.



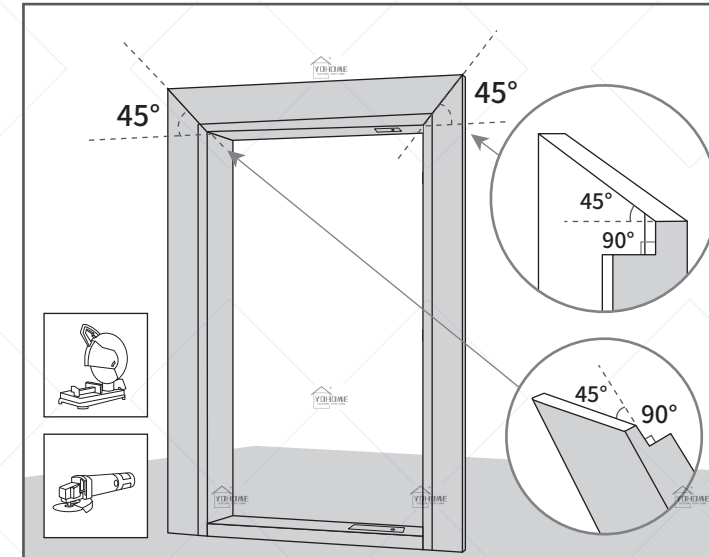
07

Installation steps

- 13 Record length and mark, cut to suitable length.



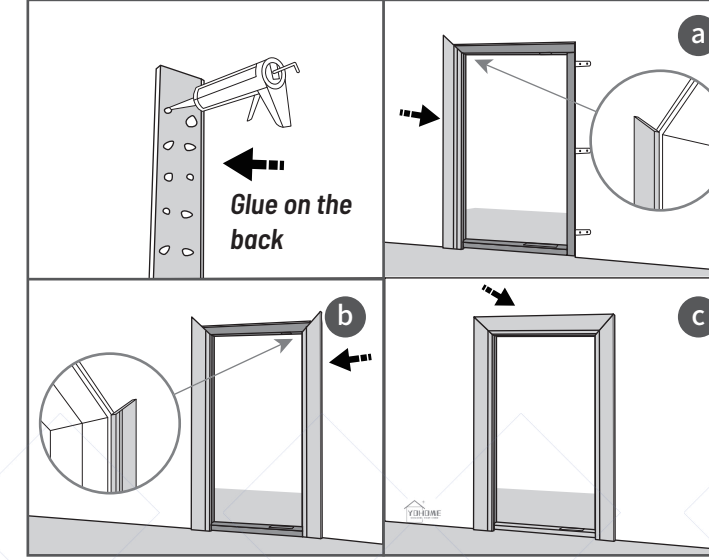
- 14 Cut the door cover line, the door cover line opening to fit the gap of the door frame.



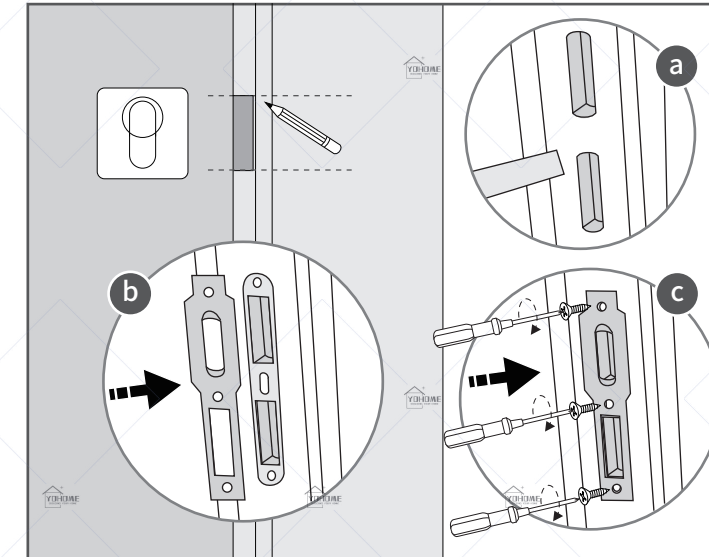
08

Installation steps

- 15 Install the door cover line, spray glass glue at the seams, install both sides of the door cover line first, and then install the top door cover line.



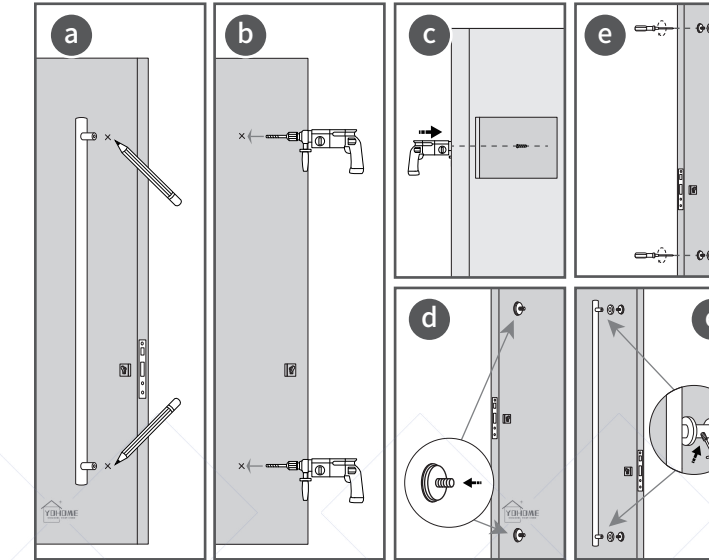
- 16 Install the lock hole, measure the position, chisel the lock hole, and install the lock hole components.



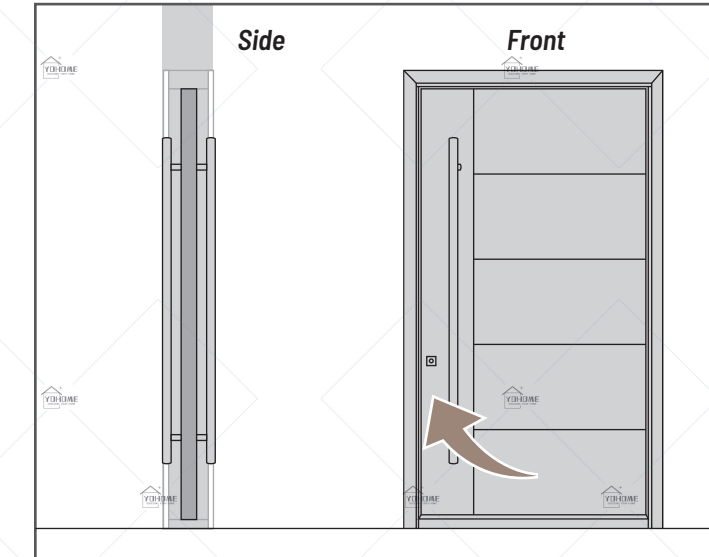
09

Installation steps

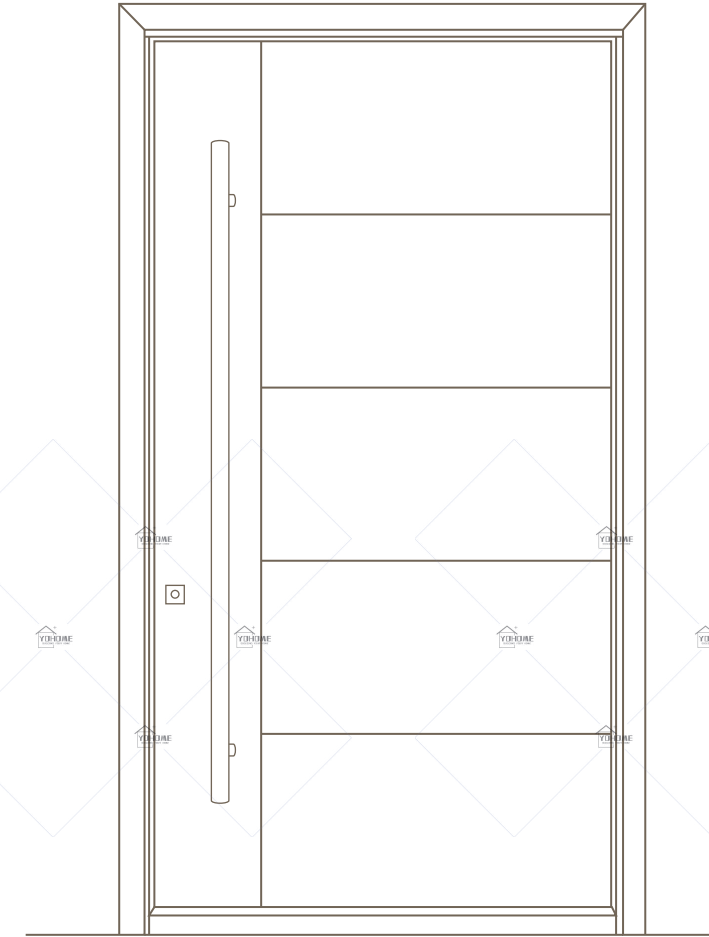
- 17 Position the handle, position the handle, drill the handle hole, and tighten the screws on the back to install the handle.
Attention: Use a wooden board to support the back to prevent cracking.



- 18 After installation, check the opening and closing of the door lock.


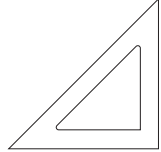
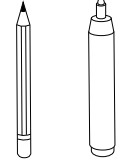
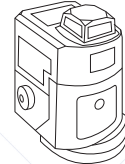
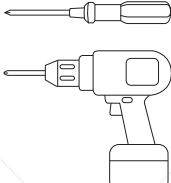
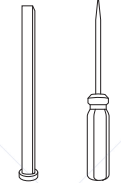
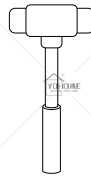
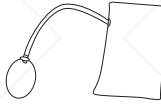
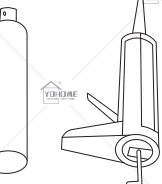
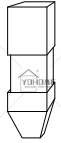
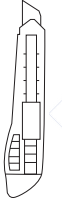
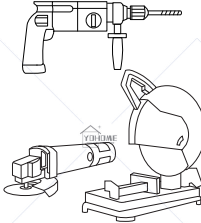


10



PIVOT ENTRY DOOR
Installation Instruction

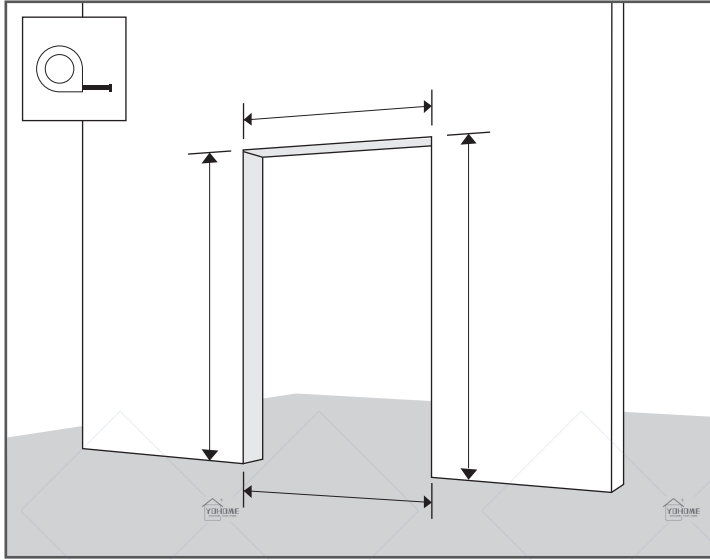
Installation Tool

 Tape Measure	 A right angle ruler	 Pencil & Colored pencils
 Level instrument	 Screwdriver & Electric Screw Driver	 Chisel & Awl
 Rubber Hammer	 Air Cushion	 Foam glue & Glass Glue
 Rubber Pad	 Utility Knife	 Electric drill & Cutting Machine

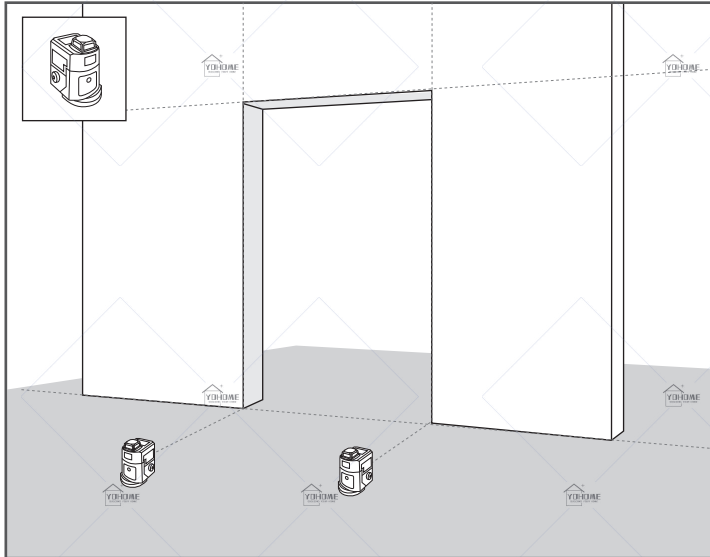
01

Installation steps

- ① Before installation, use a tape measure to measure the length (height) / width / thickness of the doorway.



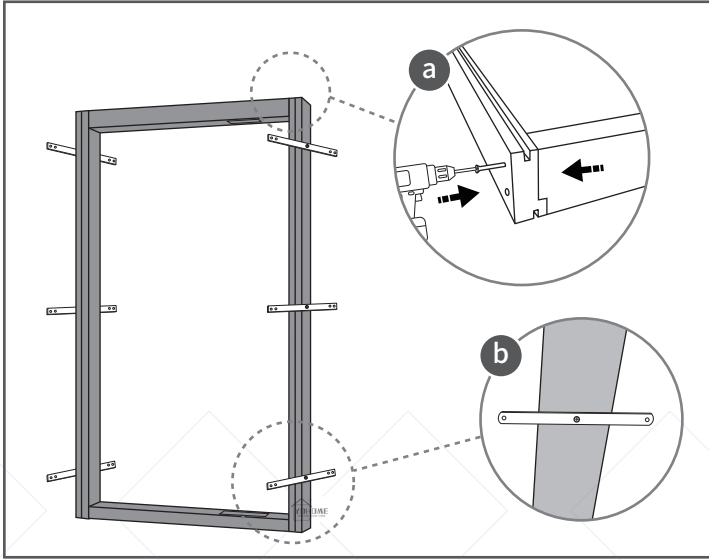
- ② Use a level to measure the flatness of the doorway.



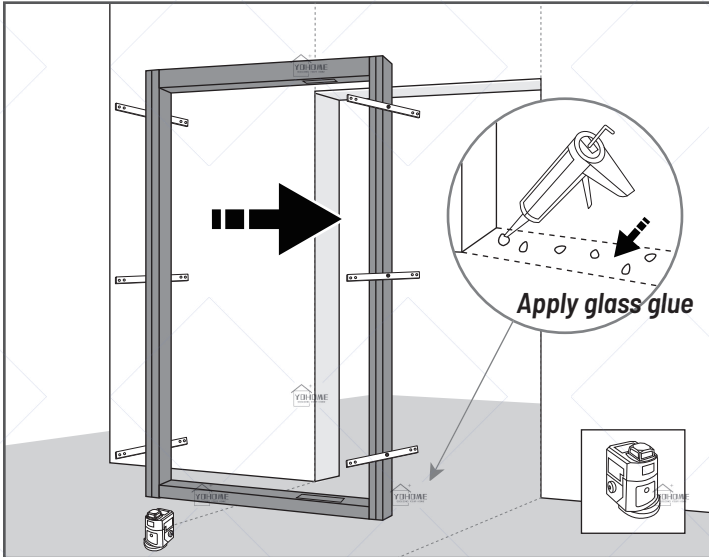
02

Installation steps

- ③ Assemble door frame and install pull tabs.



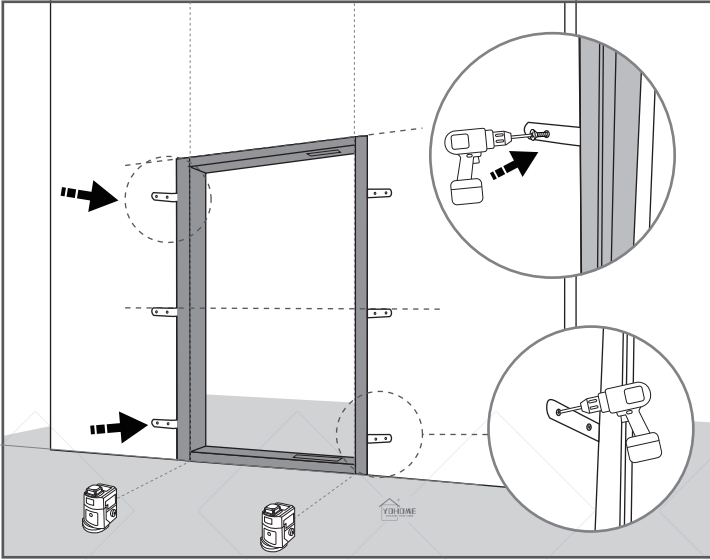
- ④ Install the door frame, apply glass glue to the bottom of the door frame at the door opening, and use a level to check if both sides are vertical.



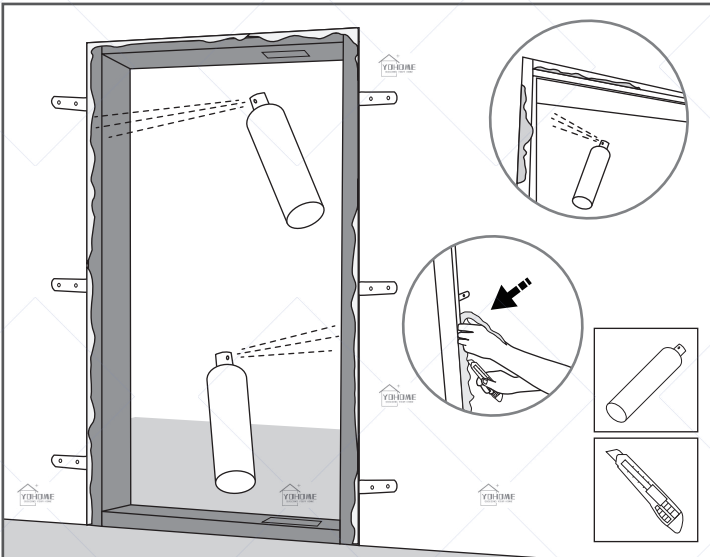
03

Installation steps

- ⑤ Use level to measure whether the door frame is vertical, then install pull piece screws, fix the door frame.



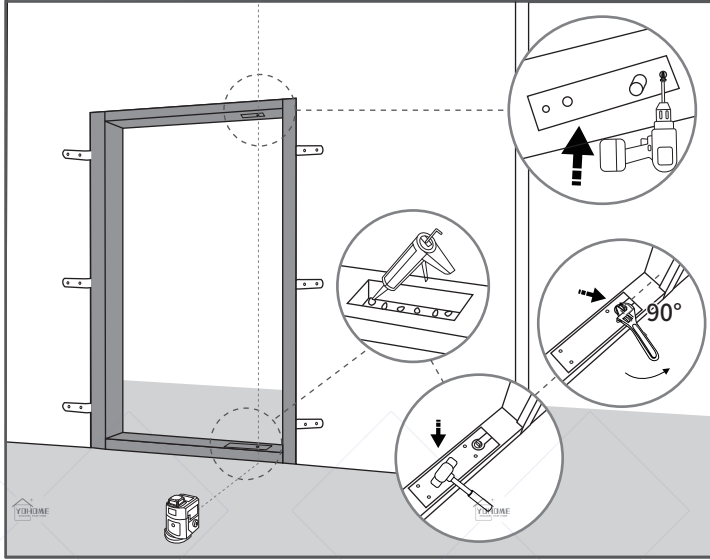
- ⑥ Spray foam, the gap around the inside and outside need to spray foam. After the foam glue dries, clean up the excess.



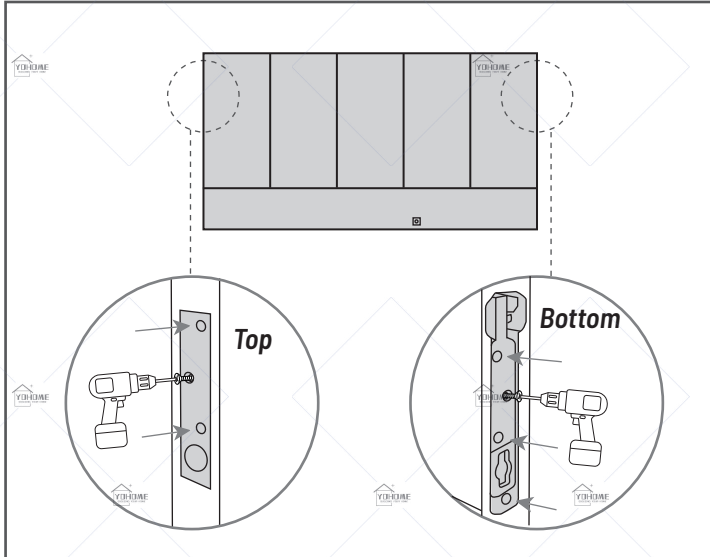
04

Installation steps

- ⑦ Install the ground spring (spray glass glue on the bottom first, then install the ground spring, and then twist the top of the ground spring by 90 degrees); Install the sky spring and use a level to measure whether the sky spring is vertical.



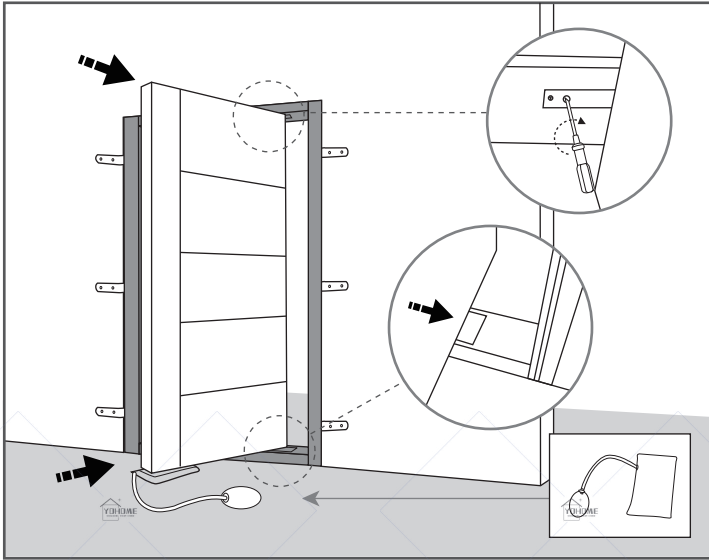
- ⑧ Install the hinge at the top and bottom of the door leaf.



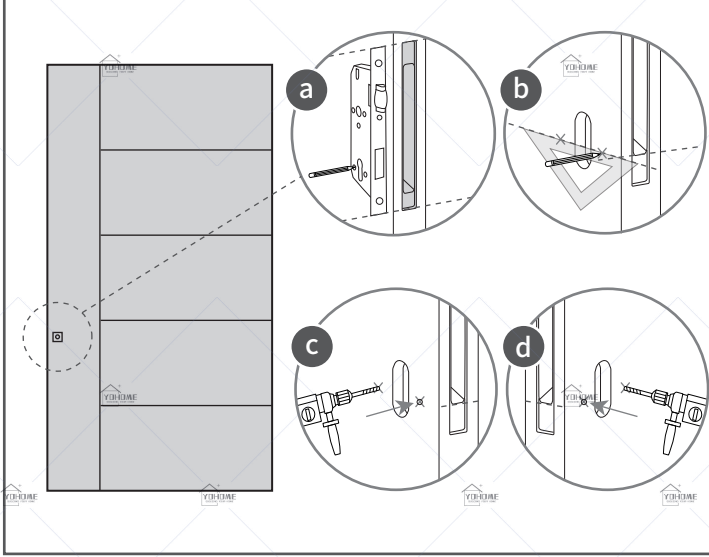
05

Installation steps

- ⑨ Install the door leaf with air cushion assistance. Align the bottom of the door leaf with the ground spring opening, and the top of the door leaf with the sky spring opening. After the sky spring is aligned, twist the screw clockwise to make the sky spring protrude and snap into the hinge of the door leaf's rotating shaft.



- ⑩ Install the door lock, measure with a ruler, draw the inside and outside positions of the lock handle with a pencil, and use an electric drill to drill out the screw hole.



06